

## RK-HTH 085x095/47x14-95-Z

Rollers for pallet trucks, with Blickle Extrathane® polyurethane tread, with steel wheel centre, without ball bearings

EAN 4047526250690

ID 250696

Customs tariff number 87169090



### Tread:

- high-quality polyurethane elastomer Blickle Extrathane®, hardness 92 Shore A
- low rolling resistance
- high abrasion resistance
- high cut and tear propagation resistance
- color light brown, non-marking, non-staining
- excellent chemical connection with the wheel center

### Wheel center:

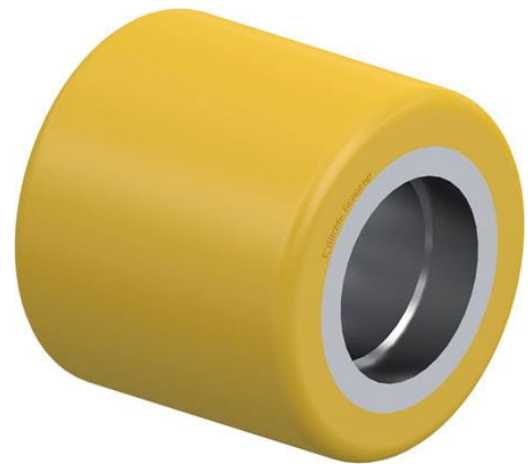
- metal

### Other features:

- high chemical resistance to many aggressive substances
- operating temperature: -15 °F to +160 °F, temporarily up to +195 °F, reduced load capacity over +105 °F

### Technical data:

Wheel Ø (D)	⌀	85 mm
Wheel width	⏏	95 mm
Load capacity at 4 km/h	⚖	910 kg
Load capacity (static)	⚖	2,275 kg
Bearing seat (S)	⊗	47 mm
Bearing seat depth (t)	⊗	14 mm
Temperature resistance min		-25 °C
Temperature resistance max		70 °C
Tread and tyre hardness		92 Shore A
Unit weight	⚖	1.2 kg
Non-marking		✓
Non-staining		✓
Antistatic	⚡	✗
ProductDetail.TechnicalData.Esd		✗
Electrically conductive	⚡	✗
Corrosion-resistant		✗
Heat-resistant	🔥	✗
Tread hydrolysis-resistant		✗
Suitable for autoclaves		✗



### Tread and tyre hardness

■ ■ ■ ■ ■ □ 92 Shore A

### Rolling resistance

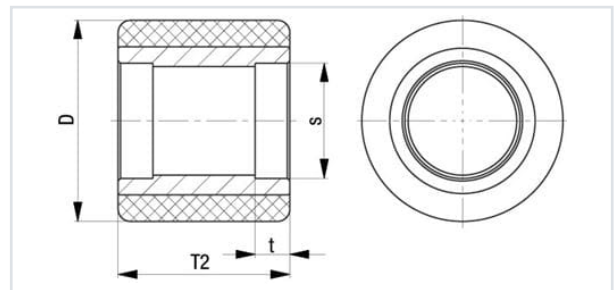
■ ■ ■ ■ ■ □ very good

### Wear resistance

■ ■ ■ ■ ■ excellent

### Operating noise / floor surface preservation

■ ■ ■ ■ □ □ good



## Product references



**Corresponding caster (Ball bearing) HTH 85x95/20-95K**