

## BKRA-VPA 126K-EL

**Light duty fixed caster, with bolt hole, wheel with solid rubber tires, with synthetic rim, electrically conductive**

**EAN** 4047526335892

**ID** 335893

**Customs tariff number** 87169090



**rig:** BKRA series

- pressed steel, zinc-plated, blue-passivated, Cr6-free

**Wheel:** VPA series

- tire: high-quality solid rubber, hardness 80 Shore A, color black
- rim: high-quality polypropylene, impact resistant, color black, Electrically conductive, color black, marking

**Other features:**

- high chemical resistance to many aggressive substances, except oils
- operating temperature: -20 °C to +60 °C, reduced load capacity over +30 °C
- electrical conductivity (ohmic resistance)  $\leq 10^4 \Omega$

### Technical data:

Wheel Ø (D)	🌀	125 mm
Wheel width	⏏	32 mm
Load capacity at 3 km/h	⚖	95 kg
Load capacity (static)	⚖	240 kg
Bearing type	⦿	ball bearing
Total height (H)	📏	158 mm
Plate Ø	🌀	57 mm
Bolt hole	🔩	13 mm
Temperature resistance min		-20 °C
Temperature resistance max		60 °C
Tread and tyre hardness		80 Shore A
Unit weight	⚖	0.6 kg
Non-marking		✗
Non-staining		✗
Antistatic	🧲	✗
Electrically conductive	🧲	✓
Corrosion-resistant		✗
Heat-resistant	🔥	✗
Tread hydrolysis-resistant		✗
Suitable for autoclaves		✗
Suitable for machine washing		✗



### Tread and tyre hardness

■ ■ ■ ■ □ □ 80 Shore A

### Rolling resistance

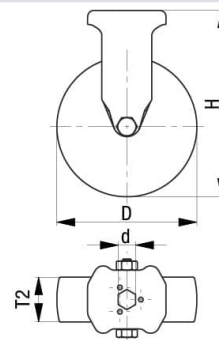
■ ■ ■ ■ □ □ good

### Wear resistance

■ □ □ □ □ □ sufficient

### Operating noise / floor surface preservation

■ ■ ■ ■ □ □ very good



## Product references



**Corresponding swivel caster LKRA-VPA 126K-EL**



**Wheel used VPA 126/8K-EL**