

RK-HTH 080x095/42x14-93-Z

Rollers for pallet trucks, with Blickle Extrathane® polyurethane tread, with steel wheel centre, without ball bearings

EAN 4047526466527

ID 466524

Customs tariff number 87169090



Tread:

- high-quality polyurethane elastomer Blickle Extrathane®, hardness 92 Shore A
- low rolling resistance
- high abrasion resistance
- high cut and tear propagation resistance
- color light brown, non-marking, non-staining
- excellent chemical connection with the wheel center

Wheel center:

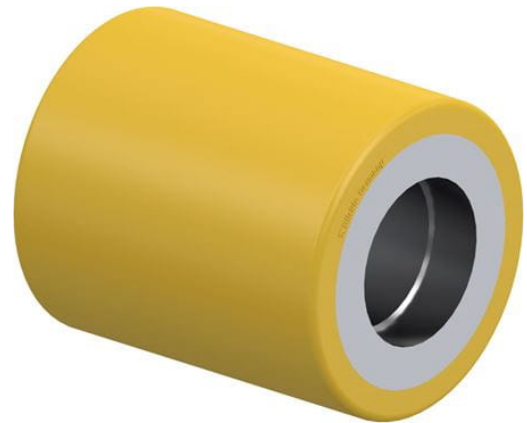
- metal

Other features:

- high chemical resistance to many aggressive substances
- operating temperature: -15 °F to +160 °F, temporarily up to +195 °F, reduced load capacity over +105 °F
- Hub recessed

Technical data:

Wheel Ø (D)	⌀	80 mm
Wheel width	⌞	95 mm
Load capacity at 4 km/h	⚖	850 kg
Load capacity (static)	⚖	2,125 kg
Bearing seat (S)	⊗	42 mm
Bearing seat depth (t)	⊞	14 mm
Temperature resistance min		-25 °C
Temperature resistance max		70 °C
Tread and tyre hardness		92 Shore A
Unit weight	⚖	1.4 kg
Non-marking		✓
Non-staining		✓
Antistatic	⚡	×
ProductDetail.TechnicalData.Esd		×
Electrically conductive	⚡	×
Corrosion-resistant		×
Heat-resistant	🔥	×
Tread hydrolysis-resistant		×
Suitable for autoclaves		×



Tread and tyre hardness

■ ■ ■ ■ ■ □ 92 Shore A

Rolling resistance

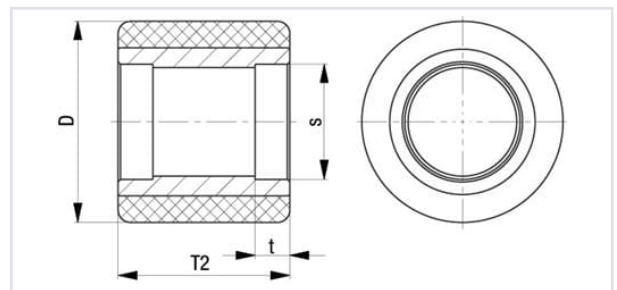
■ ■ ■ ■ ■ □ very good

Wear resistance

■ ■ ■ ■ ■ excellent

Operating noise / floor surface preservation

■ ■ ■ ■ □ □ good



Product references



Corresponding caster (Ball bearing) HTH 80x95/20-89K