

## LSFE-GTH 160K

**Heavy duty welded steel swivel caster, with polyurethane spring, heavy duty wheel, with Blickle Extrathane® polyurethane tread, with cast iron wheel center**

**EAN** 4047526620820

**ID** 620823

**Customs tariff number** 87169090



### rig: LSFE series

- particularly robust welded steel construction, zinc-plated, yellow-passivated, Cr6-free
- elastomer spring for excellent damping properties
- maintenance-free spring mechanism
- axial grooved ball bearing ISO 104 and tapered roller bearing ISO 355 in the swivel head
- bolted and secured welded central kingpin, extremely strong
- dust and splash-proof
- grease nipple

### Wheel: GTH series

- tread: high-quality polyurethane elastomer Blickle Extrathane®, hardness 92 Shore A, color light brown, non-marking, non-staining
- wheel center: rugged gray cast iron
- with grease nipple, lacquered, color silver

### Other features:

- high chemical resistance to many aggressive substances
- operating temperature: -5 °F to +160 °F, temporarily up to +195 °F, reduced load capacity over +105 °F

### Technical data:

Wheel Ø (D)	⌀	160 mm
Wheel width	⊥	50 mm
Load capacity at 4 km/h	⬆	800 kg
Load capacity (static)	⬆	2,000 kg
Bearing type	⊙	ball bearing
Spring tension	≡	500 kg
Initial tension	≡	50 kg
Spring travel	⬆	25 mm
Total height (H)	⊘	245 mm
Plate size	⊠	140 x 110 mm
Bolt hole spacing	⊠	105 x 75–80 mm
Bolt hole Ø	⌀	11 mm
Offset (F)	⊘	100 mm
Temperature resistance min		-20 °C
Temperature resistance max		70 °C
Tread and tyre hardness		92 Shore A
Unit weight	⬆	10.5 kg
Non-marking		✓
Non-staining		✓
Antistatic	⊠	✗



### Tread and tyre hardness

■■■■■□ 92 Shore A

### Rolling resistance

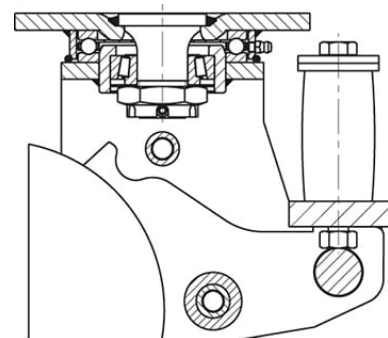
■■■■■□ very good



### Wear resistance

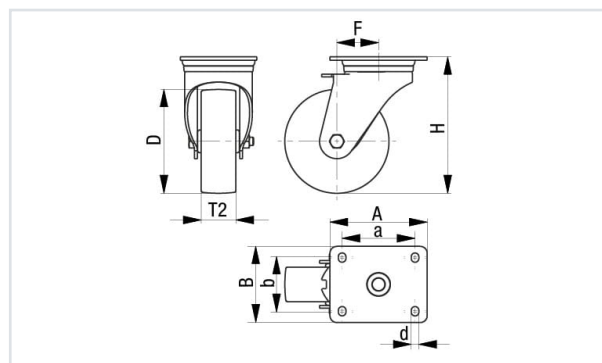
■■■■■□ excellent

### Operating noise / floor surface preservation

■■■■■□ good



Electrically conductive		×
Corrosion-resistant		×
Heat-resistant		×
Tread hydrolysis-resistant		×
Suitable for autoclaves		×
Suitable for machine washing		×



## Product references



Corresponding rigid caster **BSFE-GTH 160K**



Wheel used **GTH 160/20K**