

## LK-G 125G-3-FI

**Pressed steel swivel caster, heavy duty design, with brake system 'stop-fix', cast iron wheel**

EAN 4047526648954

ID 648956

Customs tariff number 87169090



**rig:** LK series

- strong pressed steel, zinc-plated, blue-passivated, Cr6-free
- double ball bearing in the swivel head
- strong central kingpin (from wheel Ø 125x50 mm)
- swivel head seal
- minimum swivel head play and smooth rolling characteristic and increased service life due to the special dynamic Blickle riveting process

**Wheel:** G series

- rugged gray cast iron, hardness 180–220 HB, grease nipple, lacquered, color silver

**Other features:**

- chemical resistance to many aggressive substances
- consider the surface pressure on sensitive floors due to high point loads
- provide adequate lubrication on a regular basis for plain bore version
- to be lubricated according to the application temperature

**Technical data:**

Wheel Ø (D)	☉	125 mm
Wheel width	⊥	35 mm
Load capacity at 4 km/h	⬆	350 kg
Load capacity (static)	⬆	875 kg
Bearing type	☉	plain bore
Total height (H)	⌀	155 mm
Plate size	⊞	140 x 110 mm
Bolt hole spacing	⊞	105 x 75–80 mm
Bolt hole Ø	⌀	11 mm
Offset (F)	⌀	42 mm
Temperature resistance min		-25 °C
Temperature resistance max		70 °C
Tread and tyre hardness		180–220 HB
Unit weight	⚖	2.7 kg
Non-marking		✗
Non-staining		✓
Antistatic	⚡	✗
Electrically conductive	⚡	✓
Corrosion-resistant		✗
Heat-resistant	🔥	✗
Tread hydrolysis-resistant		✗
Suitable for autoclaves		✗
Suitable for machine washing		✗



**Tread and tyre hardness**

■■■■■ 180–220 HB

**Rolling resistance**

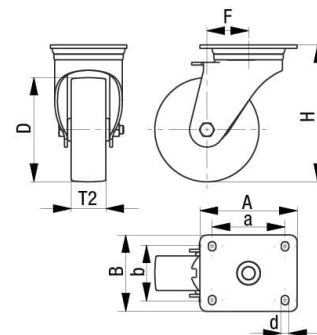
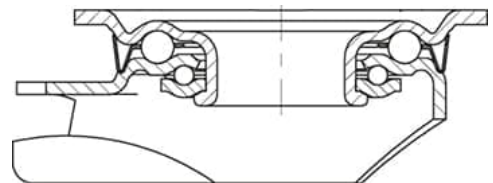
■■■■■ excellent

**Wear resistance**

■■■■■ excellent

**Operating noise / floor surface preservation**

■■■■■ sufficient



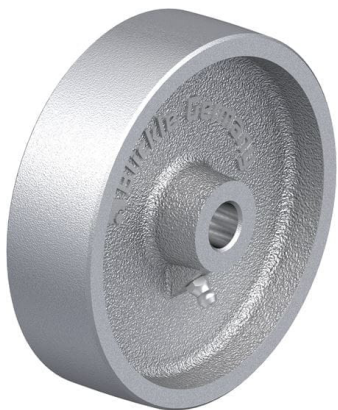
## Product references



**Corresponding rigid caster BK-G 125G-3**



**Corresponding swivel caster LK-G 125G-3**



**Wheel used G 125/15G**