

## LEZ-PO 75G-FI-FA

**Pressed steel swivel caster, with stem fitting, with brake system 'stop-fix', nylon wheel, with steel thread guard**

**EAN** 4047526018528

**ID** 742606

**Customs tariff number** 87169090



**rig:** LEZ series

- pressed steel, zinc-plated, blue-passivated, Cr6-free
- double ball bearing in the swivel head
- minimum swivel head play and smooth rolling characteristic and increased service life due to the special dynamic Blickle riveting process
- steel plug-in stem and central kingpin bolted and secured

**Wheel:** PO series

- high-quality nylon 6, impact resistant, hardness 70 Shore D, color natural white

**Other features:**

- high chemical resistance to many aggressive substances
- operating temperature: -25 °C to +80 °C, reduced load capacity over +35 °C

**Technical data:**

Wheel Ø (D)	☉	75 mm
Wheel width	⊥	32 mm
Load capacity at 4 km/h	⊞	150 kg
Load capacity (static)	⊞	375 kg
Bearing type	☉	plain bore
Total height (H)	⌀	100 mm
Stem Ø	⊥	20 mm
Stem length	⊥	50 mm
Offset (F)	☉	42 mm
Temperature resistance min		-25 °C
Temperature resistance max		80 °C
Tread and tyre hardness		70 Shore D
Unit weight	⊞	0.7 kg
Non-marking		✓
Non-staining		✓
Antistatic	☉	✗
Electrically conductive	☉	✗
Corrosion-resistant		✗
Heat-resistant	☉	✗
Tread hydrolysis-resistant		✗
Suitable for autoclaves		✗
Suitable for machine washing		✗



**Tread and tyre hardness**

■■■■■ 70 Shore D

**Rolling resistance**

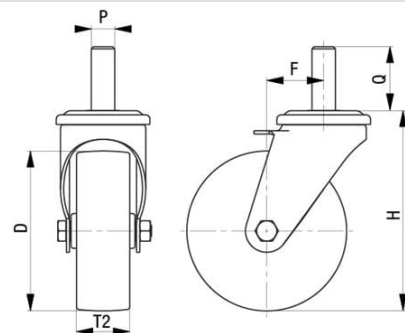
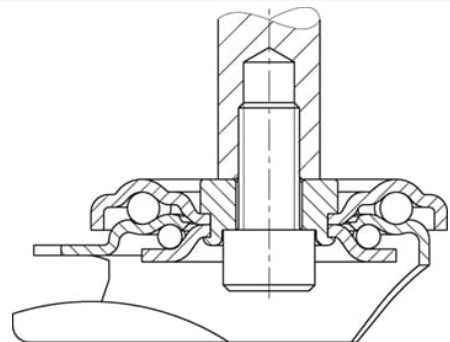
■■■■■ excellent

**Wear resistance**

■■■■■ good

**Operating noise / floor surface preservation**

■■■■■ satisfactory



## Product references



**Corresponding swivel caster LEZ-PO 75G-FA**



**Wheel used PO 75/12G**