

LRA-VPA 75G-FA-E07

Light duty swivel caster, with bolt hole fitting, with metal expander, wheel with solid rubber tires, with synthetic rim, with steel thread guard

EAN 4047526044701

ID 751153

Customs tariff number 83022000



rig: LRA series

- pressed steel, zinc-plated, blue-passivated, Cr6-free
- double ball bearing in the swivel head
- minimum swivel head play and smooth rolling characteristic and increased service life due to the special dynamic Blickle riveting process

Wheel: VPA series

- tire: high-quality solid rubber, hardness 80 Shore A, color gray, non-marking, non-staining
- rim: high-quality nylon 6 or polypropylene in the electrically conductive version "-EL", impact resistant, color black

Other features:

- high chemical resistance to many aggressive substances, except oils
- operating temperature: -20 °C to +60 °C, reduced load capacity over +30 °C

Technical data:

Wheel Ø (D)	☉	75 mm
Wheel width	⊥	25 mm
Load capacity at 3 km/h	⚖	60 kg
Load capacity (static)	⚖	150 kg
Bearing type	☉	plain bore
Total height (H)	⊥	101 mm
Internal tube dimension	☉	39–45 mm
ProductDetail.TechnicalData.InnerPipeDimensionSquareTube		32–38 mm
Offset (F)	⊥	29 mm
Temperature resistance min		-20 °C
Temperature resistance max		60 °C
Tread and tyre hardness		80 Shore A
Unit weight	⚖	0.5 kg
Non-marking		✓
Non-staining		✓
Antistatic	⚡	×
Electrically conductive	⚡	×
Corrosion-resistant		×
Heat-resistant	🔥	×
Tread hydrolysis-resistant		×
Suitable for autoclaves		×
Suitable for machine washing		×



Tread and tyre hardness

■ ■ ■ ■ ■ 80 Shore A

Rolling resistance

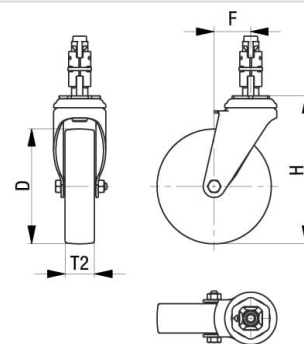
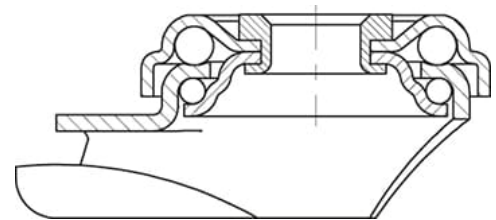
■ ■ ■ ■ ■ good

Wear resistance

■ ■ ■ ■ ■ sufficient

Operating noise / floor surface preservation

■ ■ ■ ■ ■ very good



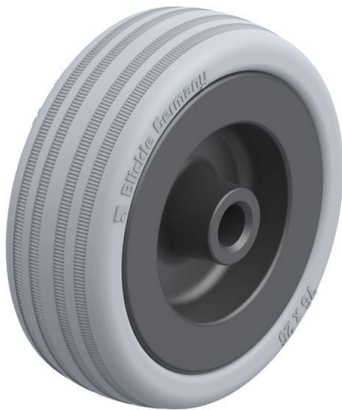
Product references



Corresponding standard locking LRA-VPA 75G-FI-FA-E07



Corresponding rigid caster BRA-VPA 75G-FA



Wheel used VPA 75/8G