

FSTH 125x30/25-15K

Guide roller with Blickle Extrathane® polyurethane tread, with steel wheel center

EAN 4047526118020
ID 757434
Customs tariff number 87169090



Tread:

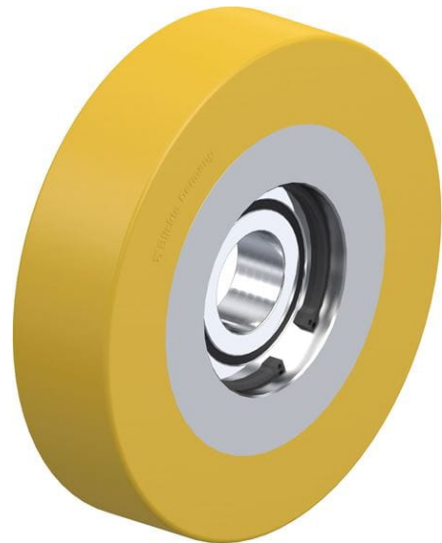
- high-quality polyurethane elastomer Blickle Extrathane®, hardness 92 Shore A
- low rolling resistance
- high abrasion resistance
- high cut and tear propagation resistance
- color light brown, non-marking, non-staining
- excellent chemical connection with the wheel center

Wheel center:

- steel

Other features:

- high chemical resistance to many aggressive substances
- operating temperature: -5 °F to +160 °F, temporarily up to +195 °F, reduced load capacity over +105 °F
- load capacity specifications refer to obstacle-free applications



Technical data:

Wheel Ø (D)	↻	125 mm
Wheel width	⌈⌋	30 mm
Load capacity at 4 km/h	⚖	375 kg
Load capacity (static)	⚖	940 kg
Bearing type	⊙	ball bearing
Ball bearing		6205 2RS
Axle bore Ø (d)		25 mm
Clamping length (T5)	⌄	15 mm
Temperature resistance min		-20 °C
Temperature resistance max		70 °C
Tread and tyre hardness		92 Shore A
Unit weight	⚖	1.1 kg
Non-marking		✓
Non-staining		✓
Antistatic	⚡	✗
ProductDetail.TechnicalData.Esd		✗
Electrically conductive	⚡	✗
Corrosion-resistant		✗
Heat-resistant	🔥	✗
Tread hydrolysis-resistant		✗
Suitable for autoclaves		✗

Tread and tyre hardness

■ ■ ■ ■ ■ □ 92 Shore A

Rolling resistance

■ ■ ■ ■ ■ □ very good

Wear resistance

■ ■ ■ ■ ■ □ excellent

Operating noise / floor surface preservation

■ ■ ■ ■ □ □ good

