

LKDB-PUA 75G

Synthetic twin wheel swivel caster, color black, wheel, with thermoplastic polyurethane tread, with nylon wheel center

EAN 4047526119003

ID 759286

Customs tariff number 87169090



rig: LKDB series

- high-quality nylon 6, impact resistant
- high-quality synthetic plain bore in the swivel head
- color black RAL 9005

Wheel: PUA series

- tread: high-quality thermoplastic polyurethane (TPU), hardness 92 Shore A, color black, non-marking, non-staining
- wheel center: high-quality nylon 6, impact resistant, color black RAL 9005

Other features:

- very high chemical resistance to many aggressive substances
- operating temperature: -5 °F to +160 °F, temporarily up to +175 °F, reduced load capacity over +85 °F
- casters are not approved for office chairs.



Technical data:

Wheel Ø (D)	☉	75 mm
Wheel width	⊥	15 mm
Number of wheels		2
Total castor width	⌀	55 mm
Load capacity at 3 km/h	⬆	75 kg
Load capacity (static)	⬆	115 kg
Bearing type	⊙	plain bore
Total height (H)	⊥	83 mm
Pin length	⊥	15 mm
Thread		M10
Offset (F)	⌀	24 mm
Temperature resistance min		-20 °C
Temperature resistance max		70 °C
Tread and tyre hardness		92 Shore A
Unit weight	⚖	0.2 kg
Non-marking		✓
Non-staining		✓
Corrosion-resistant		✗
Heat-resistant	🔥	✗
Suitable for autoclaves		✗
Suitable for machine washing		✗

Tread and tyre hardness

■ ■ ■ ■ ■ □ 92 Shore A

Rolling resistance

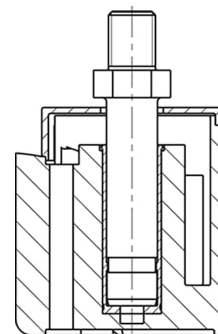
■ ■ ■ ■ ■ □ very good

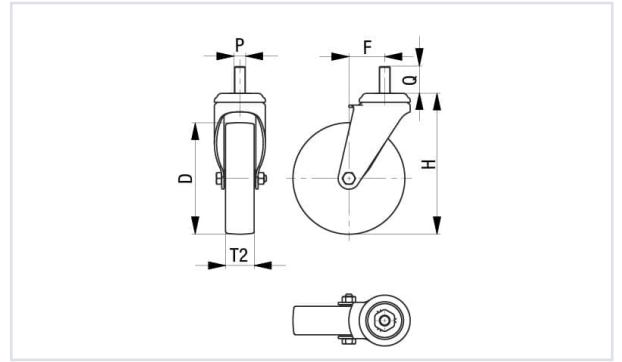
Wear resistance

■ ■ ■ ■ ■ □ very good

Operating noise / floor surface preservation

■ ■ ■ ■ □ □ good





Product references

