

LRA-VPA 50G-ER03

**Light duty swivel castor, with bolt hole fitting, with synthetic expander
Wheel, with solid rubber tyres, with synthetic rim**

EAN 4047526129781

ID 847963

Customs tariff number 83022000



rig: LRA series

- pressed steel, zinc-plated, blue-passivated, Cr6-free
- double ball bearing in the swivel head
- minimum swivel head play and smooth rolling characteristic and increased service life due to the special dynamic Blickle riveting process

Wheel: VPA series

- tire: high-quality solid rubber, hardness 80 Shore A, color gray, non-marking, non-staining
- rim: high-quality nylon 6 or polypropylene in the electrically conductive version "-EL", impact resistant, color black

Other features:

- high chemical resistance to many aggressive substances, except oils
- operating temperature: -20 °C to +60 °C, reduced load capacity over +30 °C

Technical data:

Wheel Ø (D)	⌀	50 mm
Wheel width	⏏	18 mm
Load capacity at 3 km/h	⚖	40 kg
Load capacity (static)	⚖	100 kg
Bearing type	⦿	plain bore
Total height (H)	⏏	72 mm
Internal tube dimension	⦿	25–30 mm
Offset (F)	⦿	23 mm
Temperature resistance min		-20 °C
Temperature resistance max		60 °C
Tread and tyre hardness		80 Shore A
Unit weight	⚖	0.2 kg
Non-marking		✓
Non-staining		✓
Antistatic	⚡	✗
Electrically conductive	⚡	✗
Corrosion-resistant		✗
Heat-resistant	🔥	✗
Tread hydrolysis-resistant		✗
Suitable for autoclaves		✗
Suitable for machine washing		✗



Tread and tyre hardness

■ ■ ■ ■ □ 80 Shore A

Rolling resistance

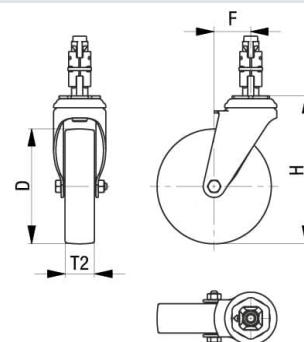
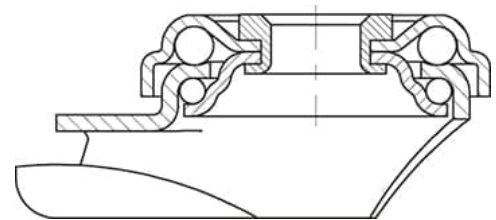
■ ■ ■ ■ □ good

Wear resistance

■ □ □ □ □ sufficient

Operating noise / floor surface preservation

■ ■ ■ ■ □ very good



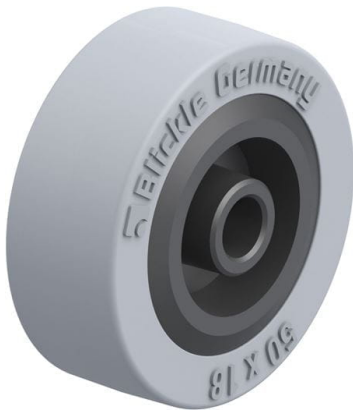
Product references



Corresponding standard locking LRA-VPA 50G-FI-ER03



Corresponding rigid caster BRA-VPA 50G



Wheel used VPA 50/8G