

LRA-VPA 75G-FI-EV05

Light duty swivel castor, with bolt hole fitting, with synthetic expander, with brake system 'stop-fix' Wheel, with solid rubber tyres, with synthetic rim

EAN 4047526130442

ID 848005

Customs tariff number 83022000



rig: LRA series

- pressed steel, zinc-plated, blue-passivated, Cr6-free
- double ball bearing in the swivel head
- minimum swivel head play and smooth rolling characteristic and increased service life due to the special dynamic Blickle riveting process

Wheel: VPA series

- tire: high-quality solid rubber, hardness 80 Shore A, color gray, non-marking, non-staining
- rim: high-quality nylon 6 or polypropylene in the electrically conductive version "-EL", impact resistant, color black

Other features:

- high chemical resistance to many aggressive substances, except oils
- operating temperature: -20 °C to +60 °C, reduced load capacity over +30 °C

Technical data:

Wheel Ø (D)	☞	75 mm
Wheel width	⊥	25 mm
Load capacity at 3 km/h	⚖	60 kg
Load capacity (static)	⚖	150 kg
Bearing type	⦿	plain bore
Total height (H)	⊕	101 mm
Internal tube dimension	⦶	29–32 mm
Offset (F)	⦶	28 mm
Temperature resistance min		-20 °C
Temperature resistance max		60 °C
Tread and tyre hardness		80 Shore A
Unit weight	⚖	0.4 kg
Non-marking		✓
Non-staining		✓
Antistatic	⚡	×
Electrically conductive	⚡	×
Corrosion-resistant		×
Heat-resistant	🔥	×
Tread hydrolysis-resistant		×
Suitable for autoclaves		×
Suitable for machine washing		×



Tread and tyre hardness

■ ■ ■ ■ ■ 80 Shore A

Rolling resistance

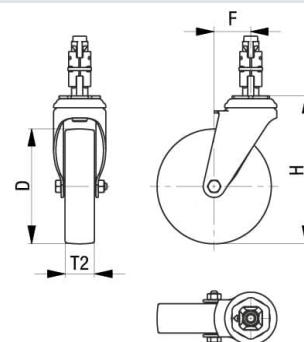
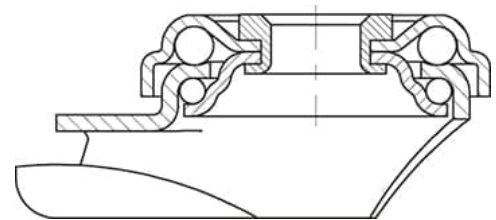
■ ■ ■ ■ ■ good

Wear resistance

■ ■ ■ ■ ■ sufficient

Operating noise / floor surface preservation

■ ■ ■ ■ ■ very good



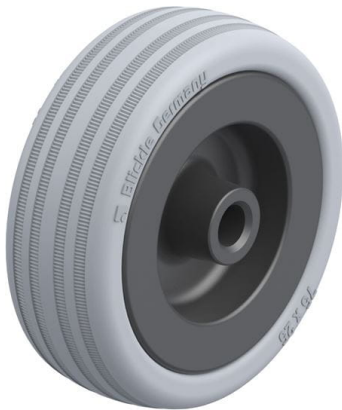
Product references



Corresponding rigid caster BRA-VPA 75G



Corresponding swivel caster LRA-VPA 75G-EV05



Wheel used VPA 75/8G