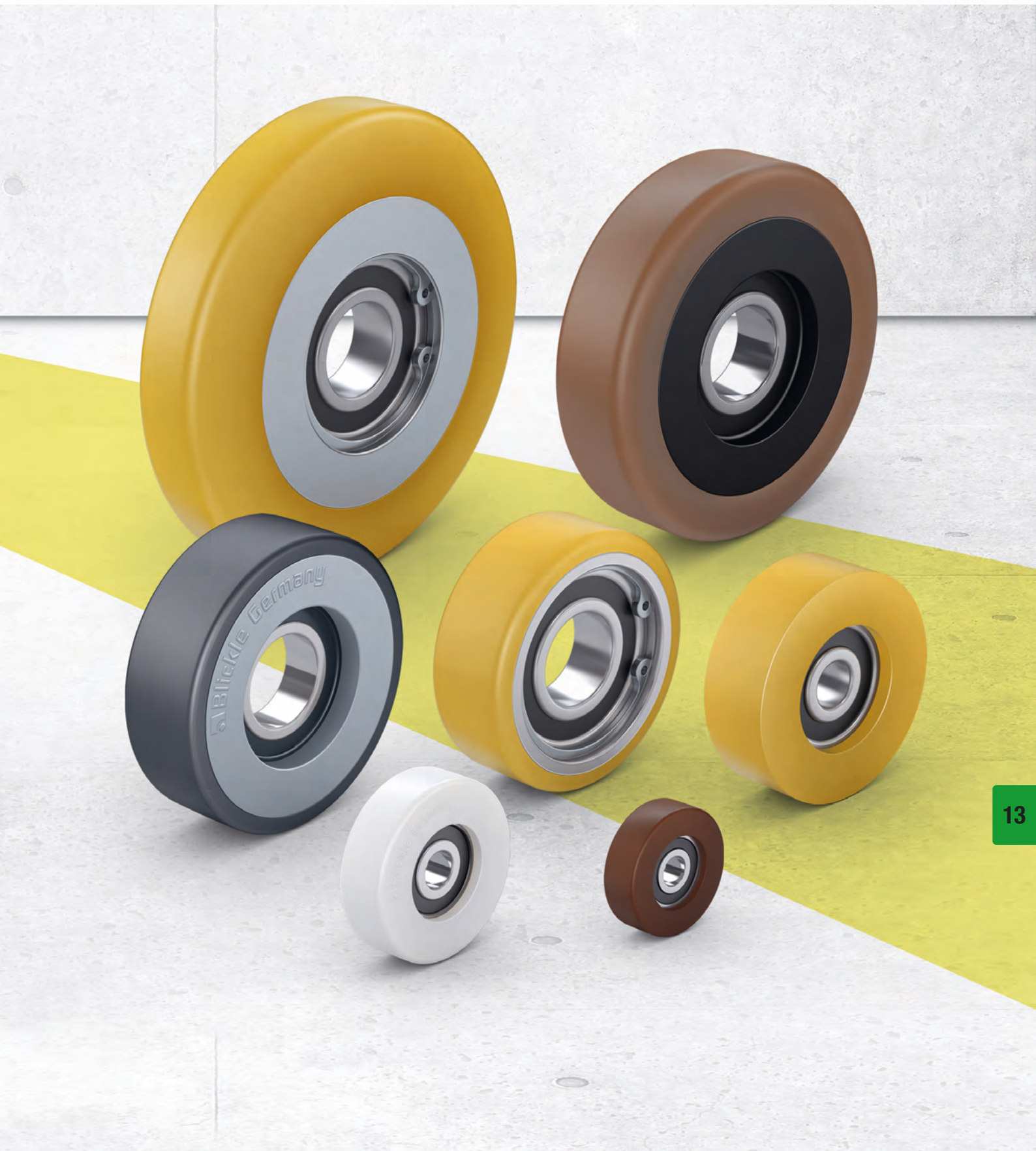
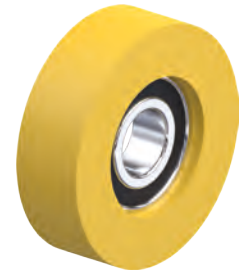


Guide rollers



Selection tool
Guide rollers



Series	FPU	FPTH	FTH
Tread / tyre	Thermoplastic polyurethane (TPU)		Polyurethane elastomer Blickle Extrathane®
Tread and tyre hardness	98 Shore A	92 Shore A	92 Shore A
Non-marking	✓	✓	✓
Electrical conductivity	optional	optional	–
Wheel centre / rim	–	nylon	–
Wheel Ø	25–60 mm	60–125 mm	30–75 mm
Load capacity up to	100 kg	290 kg	150 kg
Rolling resistance	■ ■ ■ ■ ■	■ ■ ■ ■ ■	■ ■ ■ ■ ■
Smooth operation and floor preservation	■ ■ ■ ■ ■	■ ■ ■ ■ ■	■ ■ ■ ■ ■
Suitability for speeds > 4 km/h	■ ■ ■ ■ ■	■ ■ ■ ■ ■	■ ■ ■ ■ ■
Hydrolysis resistant	–	✓	–
For a description of the wheel, refer to	page 514	page 515	page 516

■ ■ ■ ■ ■ excellent
 ■ ■ ■ ■ ■ very good
 ■ ■ ■ ■ ■ good
 ■ ■ ■ ■ ■ satisfactory
 ■ ■ ■ ■ ■ sufficient
 ✓ yes – no

13



FSTH	FPOB	FSVU	FPO
Polyurethane elastomer Blickle Extrathane®	Polyurethane elastomer Blickle Besthane®	Polyurethane elastomer Vulkollan®	Nylon
92 Shore A	92 Shore A	92 Shore A	70 Shore D
✓	✓	✓	✓
optional	–	–	optional
steel	nylon	steel	–
40–125 mm	80–125 mm	40–100 mm	25–125 mm
375 kg	375 kg	250 kg	530 kg
■ ■ ■ ■ ■ □	■ ■ ■ ■ ■	■ ■ ■ ■ ■ □	■ ■ ■ ■ ■
■ ■ ■ ■ □ □	■ ■ ■ ■ □ □	■ ■ ■ ■ □ □	■ ■ □ □ □ □
■ ■ ■ ■ ■ □	■ ■ ■ ■ ■	■ ■ ■ ■ ■	■ ■ ■ ■ □ □
–	✓	–	–
page 517	page 518	page 519	page 520

FPU series

Guide rollers with thermoplastic polyurethane tread

15–100 kg

Tread and tyre hardness

98 Shore A

Smooth operation / floor preservation

good

Rolling resistance

very good

Wear resistance

very good

Tread:

- high-quality thermoplastic polyurethane (TPU), hardness 98 Shore A
- very low rolling resistance
- high abrasion resistance
- colour brown, non-marking, non-staining
- tread directly injected onto the ball bearing

Other features:

- high chemical resistance to many aggressive substances
- operating temperature: -20 °C to +70 °C, temporarily up to +90 °C, reduced load capacity over +35 °C
- load capacity specifications refer to obstacle-free applications

Additional details:

- wheel series: page 72
- tread: page 55
- bearing types: page 84–85
- chemical resistance: page 51

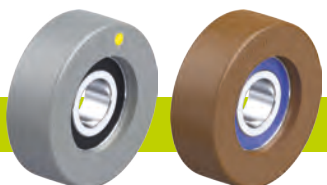


Guide rollers	Wheel Ø (D) [mm]	Wheel width (T2) [mm]	Load capacity [kg]	Ball bearing	Axle bore Ø (d) [mm]	Clamping length (T5) [mm]
FPU 25x10/6-6K	25	10	15	626 2RS	6	6
FPU 30x8/6-6K	30	8	15	626 2RS	6	6
FPU 30x11/8-7K	30	11	25	608 2RS	8	7
FPU 35x11/8-7K	35	11	25	608 2RS	8	7
FPU 40x16/12-10K	40	16	40	6201 2RS	12	10
FPU 40x20/10-9K	40	20	55	6200 2RS	10	9
FPU 50x15/10-9K	50	15	45	6200 2RS	10	9
FPU 50x15/12-10K	50	15	45	6201 2RS	12	10
FPU 50x20/15-11K	50	20	65	6202 2RS	15	11
FPU 50x25/15-11K	50	25	80	6202 2RS	15	11
FPU 60x20/17-12K	60	20	80	6203 2RS	17	12
FPU 60x25/15-13K	60	25	100	6302 2RS	15	13
FPU 60x25/20-12K	60	25	100	6004 2RS	20	12

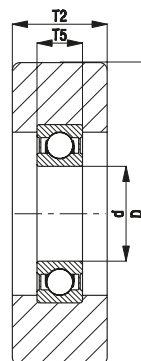
Other dimensions available upon request

13

Versions / options



	electrically conductive version, non-marking grey	with stainless steel ball bearing in the wheel hub
Technical description page	50	84
Product code suffix	-ELS	-XK
Available for	upon request	upon request



FPTH series

Guide rollers with thermoplastic polyurethane tread, with nylon wheel centre

110–290 kg

Tread and tyre hardness

92 Shore A

Smooth operation / floor preservation

good

Rolling resistance

very good

Wear resistance

very good

Tread:

- high-quality thermoplastic polyurethane (TPU), hardness 92 Shore A
- low rolling resistance
- high abrasion resistance
- **hydrolysis resistant**
- colour dark grey, non-marking, non-staining
- chemically-bonded inseparable connection with the wheel centre

Wheel centre:

- high-quality nylon 6, impact resistant
- colour silver grey

Other features:

- very high chemical resistance to many aggressive substances
- operating temperature: -20 °C to +70 °C, temporarily up to +90 °C, reduced load capacity over +35 °C
- load capacity specifications refer to obstacle-free applications

Additional details:

- wheel series: page 72
- tread: page 55
- bearing types: page 84–85
- chemical resistance: page 51



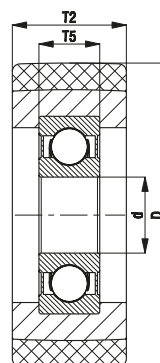
Guide rollers	Wheel Ø	Wheel width	Load capacity	Ball bearing	Axle bore Ø	Clamping length
	(D) [mm]	(T2) [mm]	[kg]		(d) [mm]	(T5) [mm]
FPTH 60x20/17-12K	60	20	110	6203 2RS	17	12
FPTH 70x20/25-15K	70	20	130	6205 2RS	25	15
FPTH 70x25/20-14K	70	25	160	6204 2RS	20	14
FPTH 80x20/15-11K	80	20	150	6202 2RS	15	11
FPTH 80x20/17-14K	80	20	150	6303 2RS	17	14
FPTH 80x20/20-14K	80	20	150	6204 2RS	20	14
FPTH 80x25/25-12K	80	25	180	6005 2RS	25	12
FPTH 100x25/25-15K	100	25	230	6205 2RS	25	15
FPTH 125x25/25-15K	125	25	290	6205 2RS	25	15

Other dimensions available upon request

Versions / options



	electrically conductive version, non-marking grey	with stainless steel ball bearing in the wheel hub
Technical description page	50	84
Product code suffix	-ELS	-XK
Available for	upon request	upon request



FTH series

Guide rollers with Blickle Extrathane® polyurethane tread

25–150 kg

Tread and tyre hardness

92 Shore A

Smooth operation / floor preservation

good

Rolling resistance

very good

Wear resistance

excellent



Tread:

- high-quality polyurethane elastomer Blickle Extrathane®, hardness 92 Shore A
- low rolling resistance
- high abrasion resistance
- high cut and tear propagation resistance
- colour light brown, non-marking, non-staining
- tread cast directly onto the ball bearing
- excellent chemical connection

Other features:

- high chemical resistance to many aggressive substances
- operating temperature: -20 °C to +70 °C, temporarily up to +90 °C, reduced load capacity over +40 °C
- load capacity specifications refer to obstacle-free applications

Additional details:

- wheel series: page 73
- tread: page 55
- bearing types: page 84–85
- chemical resistance: page 51

Guide rollers	Wheel Ø	Wheel width	Load capacity	Ball bearing	Axle bore Ø	Clamping length
	(D) [mm]	(T2) [mm]	[kg]		(d) [mm]	(T5) [mm]
FTH 30x8/6-6K	30	8	25	626 2RS	6	6
FTH 30x11/9-7K	30	11	30	609 2RS	9	7
FTH 30x14/5-12K	30	14	50	2 x 635 2RS	5	12
FTH 34x16/8-7K	34	16	35	608 2RS	8	7
FTH 35x14/12-8K	35	14	40	6001 2RS	12	8
FTH 36x13/10-9K	36	13	45	6200 2RS	10	9
FTH 40x15/10-8K	40	15	45	6000 2RS	10	8
FTH 40x20/10-9K	40	20	50	6200 2RS	10	9
FTH 45x17/15-11K	45	17	70	6202 2RS	15	11
FTH 50x15/10-9K	50	15	65	6200 2RS	10	9
FTH 50x15/12-12K	50	15	80	6301 2RS	12	12
FTH 50x18/15-11K	50	18	80	6202 2RS	15	11
FTH 52x15/12-12K	52	15	85	6301 2RS	12	12
FTH 60x20/17-12K	60	20	100	6203 2RS	17	12
FTH 61x30/17-12K	61	30	105	6203 2RS	17	12
FTH 62x15/20-12K	62	15	105	6004 2RS	20	12
FTH 70x20/25-15K	70	20	150	6205 2RS	25	15
FTH 75x23/20-14K	75	23	150	6204 2RS	20	14

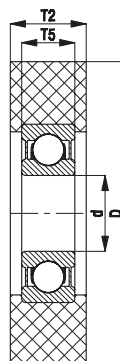
Other dimensions available upon request

Versions / options



with stainless steel ball bearing in the wheel hub

Technical description page	84
Product code suffix	-XK
Available for	upon request



FSTH series

Guide rollers with Blickle Extrathane® polyurethane tread, with steel wheel centre

60–375 kg

Tread and tyre hardness

92 Shore A

Smooth operation / floor preservation

good

Rolling resistance

very good

Wear resistance

excellent



Tread:

- high-quality polyurethane elastomer Blickle Extrathane®, hardness 92 Shore A
- low rolling resistance
- high abrasion resistance
- high cut and tear propagation resistance
- colour light brown, non-marking, non-staining
- excellent chemical connection with the wheel centre

Wheel centre:

- steel

Other features:

- high chemical resistance to many aggressive substances
- operating temperature: -20 °C to +70 °C, temporarily up to +90 °C, reduced load capacity over +40 °C
- load capacity specifications refer to obstacle-free applications

Additional details:

- wheel series: page 73
- tread: page 55
- bearing types: page 84–85
- chemical resistance: page 51

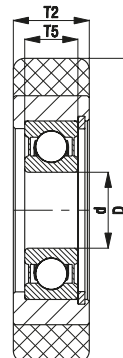
Guide rollers	Wheel Ø (D) [mm]	Wheel width (T2) [mm]	Load capacity [kg]	Ball bearing	Axle bore Ø (d) [mm]	Clamping length (T5) [mm]
FSTH 40x13/10-8K	40	13	60	6000 2RS	10	8
FSTH 40x15/10-8K	40	15	70	6000 2RS	10	8
FSTH 40x20/10-8K	40	20	90	6000 2RS	10	8
FSTH 40x25/10-8K	40	25	115	6000 2RS	10	8
FSTH 50x15/10-8K	50	15	85	6000 2RS	10	8
FSTH 50x18/17-10K	50	18	100	6003 2RS	17	10
FSTH 50x25/12-10K	50	25	140	6201 2RS	12	10
FSTH 55x20/15-11K	55	20	125	6202 2RS	15	11
FSTH 60x20/15-13K	60	20	135	6302 2RS	15	13
FSTH 60x20/20-12K	60	20	135	6004 2RS	20	12
FSTH 60x25/20-12K	60	25	170	6004 2RS	20	12
FSTH 68x20/15-13K	68	20	155	6302 2RS	15	13
FSTH 70x20/20-12K	70	20	160	6004 2RS	20	12
FSTH 70x25/20-15K	70	25	200	6304 2RS	20	15
FSTH 70x25/25-15K	70	25	200	6205 2RS	25	15
FSTH 75x25/20-15K	75	25	215	6304 2RS	20	15
FSTH 75x25/25-15K	75	25	215	6205 2RS	25	15
FSTH 80x20/20-14K	80	20	180	6204 2RS	20	14
FSTH 80x25/20-15K	80	25	230	6304 2RS	20	15
FSTH 80x25/25-15K	80	25	230	6205 2RS	25	15
FSTH 90x25/20-15K	90	25	260	6304 2RS	20	15
FSTH 90x25/25-15K	90	25	260	6205 2RS	25	15
FSTH 100x25/20-15K	100	25	250	6304 2RS	20	15
FSTH 100x25/25-15K	100	25	250	6205 2RS	25	15
FSTH 110x25/25-15K	110	25	275	6205 2RS	25	15
FSTH 120x25/25-15K	120	25	300	6205 2RS	25	15
FSTH 125x25/25-15K	125	25	320	6205 2RS	25	15
FSTH 125x30/20-15K	125	30	375	6304 2RS	20	15
FSTH 125x30/25-15K	125	30	375	6205 2RS	25	15

Other dimensions available upon request



Versions / options

	with aluminium wheel centre	antistatic version, non-marking grey	other versions
Technical description page		50	
Product code suffix	FALTH series	-AS	
Available for	upon request	upon request	upon request



FPOB series

Guide rollers with Blickle Besthane® polyurethane tread, with nylon wheel centre

160–375 kg

Tread and tyre hardness

92 Shore A

Smooth operation / floor preservation

good

Rolling resistance

excellent

Wear resistance

excellent



Tread:

- high-quality polyurethane elastomer Blickle Besthane®, hardness 92 Shore A
- very low rolling resistance
- **high dynamic load capacity**
- high abrasion resistance
- high cut and tear propagation resistance
- **hydrolysis resistant**
- colour brown, non-marking, non-staining
- excellent chemical connection with the wheel centre

Wheel centre:

- high-quality nylon 6, impact resistant
- colour black

Other features:

- high chemical resistance to many aggressive substances
- operating temperature: -20 °C to +70 °C, reduced load capacity over +35 °C
- load capacity specifications refer to obstacle-free applications

Additional details:

- wheel series: page 73
- tread: page 56
- bearing types: page 84–85
- chemical resistance: page 51

Guide rollers

	Wheel Ø (D) [mm]	Wheel width (T2) [mm]	Load capacity at 4 km/h [kg]	Load capacity at 10 km/h [kg]	Ball bearing	Axle bore Ø (d) [mm]	Clamping length (T5) [mm]
FPOB 80x20/20-14K	80	20	160	110	6204 2RS	20	14
FPOB 100x25/25-15K	100	25	250	170	6205 2RS	25	15
FPOB 125x30/25-15K	125	30	375	260	6205 2RS	25	15

Other dimensions available upon request

13

Versions / options



with stainless steel
ball bearing
in the wheel hub

Technical description page

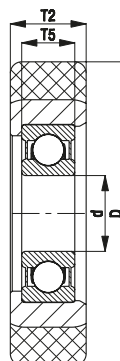
84

Product code suffix

-XK

Available for

upon request



FSVU series

Guide rollers with Vulkollan® tread, with steel wheel centre



70–250 kg

Tread and tyre hardness
 92 Shore A

Smooth operation / floor preservation
 good

Rolling resistance
 very good

Wear resistance
 excellent



Tread:

- high-quality polyurethane elastomer Vulkollan®, hardness 92 Shore A
- low rolling resistance
- **high dynamic load capacity**
- high abrasion resistance
- high cut and tear propagation resistance
- colour natural, non-marking, non-staining
- excellent chemical connection with the wheel centre

Wheel centre:

- steel

Other features:

- high chemical resistance to many aggressive substances
- operating temperature: -20 °C to +70 °C, temporarily up to +90 °C, reduced load capacity over +40 °C
- load capacity specifications refer to obstacle-free applications

Additional details:

- wheel series: page 73
- tread: page 56
- bearing types: page 84–85
- chemical resistance: page 51

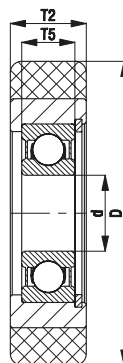
Guide rollers	Wheel Ø	Wheel width	Load capacity at 4 km/h	Load capacity at 10 km/h	Ball bearing	Axle bore Ø	Clamping length
	(D) [mm]	(T2) [mm]	[kg]	[kg]		(d) [mm]	(T5) [mm]
FSVU 40x15/10-8K	40	15	70	50	6000 2RS	10	8
FSVU 50x18/17-10K	50	18	100	70	6003 2RS	17	10
FSVU 60x20/20-12K	60	20	135	95	6004 2RS	20	12
FSVU 70x25/25-15K	70	25	200	140	6205 2RS	25	15
FSVU 80x25/25-15K	80	25	230	160	6205 2RS	25	15
FSVU 100x25/25-15K	100	25	250	175	6205 2RS	25	15

Versions / options



with stainless steel ball bearing in the wheel hub

Technical description page	84
Product code suffix	-XK
Available for	upon request



FPO series

Guide rollers with nylon tread

40–530 kg

Tread and tyre hardness

70 Shore D

Smooth operation / floor preservation

satisfactory

Rolling resistance

excellent

Wear resistance

good



Tread:

- high-quality nylon 6, impact resistant, hardness 70 Shore D
- very low rolling resistance
- easy operation on smooth surfaces
- high abrasion resistance
- colour natural white
- tread directly injected onto the ball bearing

Other features:

- high chemical resistance to many aggressive substances
- operating temperature: -20 °C to +80 °C, reduced load capacity over +35 °C
- load capacity specifications refer to obstacle-free applications

Additional details:

- wheel series: page 74
- tread: page 57
- bearing types: page 84–85
- chemical resistance: page 51

Guide rollers	Wheel Ø (D) [mm]	Wheel width (T2) [mm]	Load capacity [kg]	Ball bearing	Axle bore Ø (d) [mm]	Clamping length (T5) [mm]
FPO 25x10/6-6K	25	10	45	626 2RS	6	6
FPO 30x8/6-6K	30	8	40	626 2RS	6	6
FPO 30x11/8-7K	30	11	55	608 2RS	8	7
FPO 35x11/8-7K	35	11	65	608 2RS	8	7
FPO 40x16/12-10K	40	16	110	6201 2RS	12	10
FPO 40x20/10-9K	40	20	130	6200 2RS	10	9
FPO 50x15/10-9K	50	15	130	6200 2RS	10	9
FPO 50x15/12-10K	50	15	130	6201 2RS	12	10
FPO 50x20/15-11K	50	20	170	6202 2RS	15	11
FPO 50x25/15-11K	50	25	215	6202 2RS	15	11
FPO 60x20/17-12K	60	20	215	6203 2RS	17	12
FPO 60x25/15-13K	60	25	260	6302 2RS	15	13
FPO 60x25/20-12K	60	25	260	6004 2RS	20	12
FPO 70x20/25-15K	70	20	240	6205 2RS	25	15
FPO 70x25/20-14K	70	25	300	6204 2RS	20	14
FPO 80x20/15-11K	80	20	270	6202 2RS	15	11
FPO 80x20/17-14K	80	20	270	6303 2RS	17	14
FPO 80x20/20-14K	80	20	270	6204 2RS	20	14
FPO 80x25/25-12K	80	25	340	6005 2RS	25	12
FPO 100x25/25-15K	100	25	425	6205 2RS	25	15
FPO 125x25/25-15K	125	25	530	6205 2RS	25	15

Other dimensions available upon request

13

Versions / options



	electrically conductive version, non-marking grey	with stainless steel ball bearing in the wheel hub
Technical description page	50	84
Product code suffix	-ELS	-XK
Available for	upon request	upon request

